

NELSON PHILATELIC SOCIETY (Inc)

May 2014

No. 363



April was "National Letter Writing" month – it's not too late to send a message!

History Lesson

POSTALHISTORY.ORG



Sites, Societies, Dealers, Literature and Items

Read a review of Postal History Night on page 5.
And check out this website.



At the Craft and Folk Art Museum in Los Angeles, CA is a show of the work of Shirley Familian. It's lots and lots and lots of stamps; stamps arranged in new patterns of design, transformed into new art. "Using stamps like mosaic tiles or fabric swatches, she composes collages that recall quilting, elaborate tile work, or intricate wallpaper design. While the process is repetitive, the result is always unique. The exhibition title reflects Familian's precise count and arduous indexing of each postage stamp that she used in this collection of work."

See more on page 4.

Meetings on the second Tuesday of the month at
Stoke School at 7:15pm sales table, 7:30 meeting

Club Programme

Tuesday, May: 4-Page display for ANZAC Allies and World War I

May Display letter: V or Victory



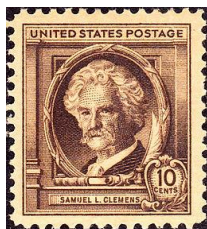
Published monthly by **Nelson Philatelic Society**

PO Box 16, Nelson 7042

Free to Full Members

Editor: Pam Frahm 47a Martin St., Nelson 7011 **Tel/Fax:** 5476322 **Email:** frahm@ts.co.nz

Huckelberry Finn stamps – see item on page 4.



Our Club – Who we are and What we like to collect.

John Glaisyer (VP) -

I am very much an eclectic collector who also likes early stamps. However I do also collect stamps of the British Colonies.



John at an open day.

Ann Ross (Treasurer) –

I am not a philatelist but a stamp collector. My oldest album states that 1-4-54 I had 627 stamps, and I have been accumulating stamps it seems forever.

My preference is for used stamps, lightly franked. Generally I don't particularly like the modern multiple issues and find more pleasure in the art work, details and depictions more common in the 20th century.

Main countries collected are NZ, Australia, Great Britain and Canada. When I do enter into my albums I like to keep the pages in thematic sets, rather than issue by issue. If I am able I will add a photo that echoes a stamp's view. Sometimes the accumulations can sit on the "to-it" for months.



Anne with Rein and Trudy

Rein Van der Wouden (Librarian) –

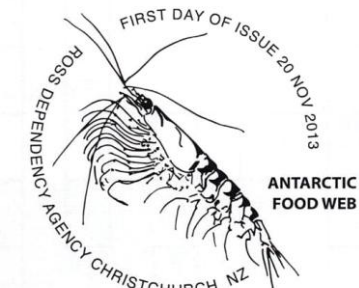
NZ (of course), mainly Netherlands (he's only missing 6 stamps!!) and Dutch Colonies, Germany, and anything interesting.

Lost his contact with USA. Older misprints (over 1600).

Legends of Australian Cooking – 2014



RECENT DATE STAMPS FROM NZ POST OFFICE



FIRST DAY OF ISSUE
8 JANUARY 2014, COLLECTABLES
WHANGANUI, NEW ZEALAND



KEEPING AN EYE ON THE ISLANDS

Niue – Traditional dress



New date stamp..... Old Niue stamp

Tokelau – Weaving



Scenic Definitive from 2012

Royal Mail celebrates 60 years of children's TV



12 of the most popular characters from children's television are included in the set.

2014 will mark the 40th anniversary of *Bagpuss* first appearing on TV, the creation of Oliver Postgate and Peter Firmin (who also created *Ivor the Engine*, *The Clangers* and many other delights). The saggy cloth cat is continually cited as one of the most favourite British children's TV character of all time and featured in *Pippin* annual as well as other places.

The year will also mark the 50th anniversary of *The Magic Roundabout*, originally made in France by Serge Danot as *Le Manège enchanté* with the help of animator Ivor Wood (who also made *Postman Pat*). The English language scripts of the show made Dougal the dog one of most popular children's characters ever to appear on TV. 500 episodes of a *Magic Roundabout* comic strip were published in *The Sun* in the 1970s.

Each decade since the 1950s is represented in this stamp issue. Even the older programmes have been frequently repeated and new series created of them. Such is the popularity of these characters, that 2014 will see the films *Postman Pat: The Movie* and *Paddington* hit the big-screen at cinemas nationwide, while *The Wombles* are set to return to TV later this year, a new CGI series giving them a high-tech makeover.

While they were originally intended for a young audience, many of the shows featured on these stamps have acquired cult status, and attracted devoted adult fans. Such was the following for *The Magic Roundabout* that when it was moved to an earlier timeslot in 1967, the BBC received complaints from the programme's adult fans who could not get home in time from work to watch it (there was no catch up TV or any means to record it in most homes back then).

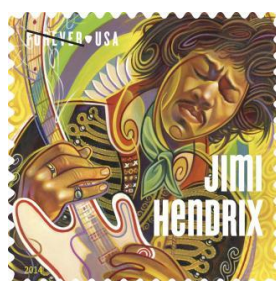
Odds and Sods... From the USA



New Flag



Humming Bird



Jimmy Hendrix



Bridge in New York



Hollywood Legends



In a campaign to promote Priority Mail and "The Amazing Spider-Man 2," the Postal Service and Sony Pictures are collaborating on a high-profile, multi-channel marketing campaign that begins this week and continues through the end of May 2014.



IN THE NEWS



The CIA invert...



This stamp wasn't even worth a lot on the collection market before it had a narrative. The curiosity of one stamp dealer revealed a CIA connection.... An employee of the agency had been the original buyer of the inverted stamps and had purchased them with petty cash for governmental use. Another employee noticed the error and, together with 7 of their colleagues, they bought replacement stamps, kept one for themselves and sold the rest off to a dealer. It doesn't sound all that bad really, but it **constitutes a conspiracy**.

The public loved it. The CIA hated it. It remains one of the great stories in U.S. philatelic history.

Post Stamp Art

By Molly Rausch



Original USA stamp



Watercolour painting

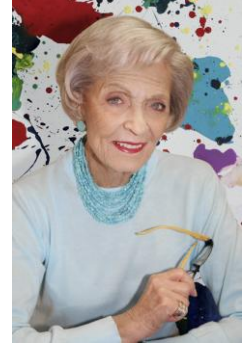


Original stamp



Water colour painting

More of Shirley Familian's stamp art...



The Annual Postal History night.

Weldon's talk was about post marks – He described the different recognised postmarks and with the aid of an OHP showed images of the different types of marks starting with:-

Manuscript Hand Written. The name of the post office but sometimes there was the name of the person.

Occasionally confused with receipts

Rubber stamps

Stereo – two outer rings

Then the alphabet types:-

'A' or coin type- with post office written inside name and date straight inside.

'B' class- name around the top with the date at the bottom.

'C' has the time as well as the date and post office

'F' squared circle

'G' 3-4 concentric lines with or without date

'H' double circle

'J' similar to the 'C' class but just had the date and an index numbers. Hard to distinguish between the two
BBJ – Blackball – outer circle with two different half circles inside

'R' rare mainly telegraphs offices.

'S' double circle like the H mainly for telegraph with the date inside.

The stamps had to be changed every decade. While they were away a relief post stamp was sent to use until the new one was ready.

Kelvin's talk was based around Hiwipango Post Office– 16 k southwest of Wakefield (around the intersection of 88 Valley and Wai-iti Rds)
The original post office was in Gordons School while the telegraph office was in the Wells' Homestead. Annette Ellis was the Post Mistress while Annie Wells was the telephonist in her own home in 1932. John and Kelvin interviewed Nancy Wills a descendent of the original Wells family couple of times to gather information about the area. When the area was divided up to be sold it was advertised as Golden Downs instead of Gordon Downs. The Golden Downs name stuck. The Hiwipango Post Office closed in 1937.



John's talk about Tonga Bay Post Office (1908 -1916) Golden Bay were the finest quality granite was quarry in NZ. 20-25 tough men who worked the quarry lived in rough housing tents. As there were more than 15 people 'living', a post office was granted to the area. John, while searching through Queen St Antiques, found a card addressed to Mrs J Stringer (Emma Gibbs) he noticed that the postmark had TG which was the Tonga post mark. Very rare. He decided to research the mark and the signature - the signature was not Ross, as John first thought, it was actually from her sister-in-law, Rose. Rose's husband worked at the Tonga Bay quarry while she lived in Araroa. He showed several photos of the bay with the workings of the quarry. There is very little remaining of the quarry even the managers house having been barged out to Rewaka, then to Huffam Rd in Motueka, the house has since been demolished.



Paul talked about modern history - a survey of post boxes (side of the road)

– Particularly the removal of roadside post boxes. 3 have gone from Stoke and Nelson city in the past few months

Removal of Collingwood St; Waterhouse St and January Main Rd Stoke which got knocked over by car or truck. He also had photos of post boxes around the area including one of a trial being run in Richmond for local mail. As nothing has happened then he assumed this was not a viable thing. Paul also told us that the road side boxes are regularly monitored to gauge their viability.

Allan thanked the Postal History members for their interesting and informative talks comparing them to detectives in their quest to find out about the history of the post in our area.



Welcome: Allan welcomed 14 members on this rather wet night. He especially welcomed members of the Postal History group for their annual talk with us.

Minutes: Minutes of the March meeting were taken as read.
Allan/Robert

Matters Arising:

- The embroiderers are happy to share the P O Box
- The AGM is coming up fast, and we will need a new president and newsletter editor.

Correspondence In: 4x catalogues; The Stamp Collector and thank you from Marie Dale. Paula/Ann

General Business:

- **Circuit Book:** Allan asked for more circuit books please.
- Nik volunteered to do supper.
- Nik asked if the magazines that mysteriously arrived could be brought back as there are others who want to read them. The Stanley Gibbons ones came from Len via Jim Hallinan.
- Allan reminded us to pop in a see the elderly members Rien (Tahunanui Dr) and John Dawson (Otamarama)

Items of interest:

- Weldon - QII overprints 2d different shades including stars and one forgery.
- Len - Fiji postcards Bega (spelt incorrectly) Beqa is correct.
- Paul - Envelopes from NZ Post – 30c unchallenged, non perforated stamp, pay on line tag.

Letter of the Month- Q

- Queen Victoria; Full Face Queens. - Weldon
- Question – two post cards one labelled Arrow Rock and one Fifeshire rock which is it? - Len
- Quarters - Ann (**WINNER**)
- Four Quid's worth of stamps - Mike P
- Early stamps of State of Victoria; Queen on the Throne – Robert Perrin.
- Queen Elizabeth the Queen Mother - Kelvin.

The meeting closed at 8pm followed by an interesting evening with postal history society (See below) and supper.

Next meeting - Next meeting ANZAC 4-page display on WWI

Queens Birthday - Australia



Coronation – Royal Mail 2013



The 2nd Class stamp is taken from a portrait by artist Terence Cuneo, commissioned to record the 1953 coronation. ● 1st Class stamp is taken from a portrait by artist Nicky Philipps. ● This 78p stamp is taken from a portrait by artist Andrew Festing, commissioned by the Royal Hospital Chelsea in 1999. ● 88p stamp is taken from a portrait by artist Pietro Annigoni, 1954. ● The £1.28 stamp is taken from a portrait by artist Sergei Pavlenko. ● The £1.88 stamp is taken from a 1992 portrait by artist Richard Stone.