

New Zealand up coming issues

The stamps have been printed using glow-in-the-dark technology to replicate the effect of **glowworms in the wild** - simply expose them to sunlight and then step into a dark space to see the stamps light up. 2016 marks 100 years since the formation of the **Royal New Zealand Returned and Services' Association (RSA)**. Since it was founded, the RSA has been an integral part of New Zealand communities.



STOP THE PRESS !!!!!

A federation newsletter has just arrived (13/02) with an attached letter from Simon Allison of NZ Post. We are now allowed to send stamps through the mail system however NO compensation claims will be allowed and this only applies to members of the NZPF and members of affiliated clubs. The restriction was put in place originally because NZ Post was unwilling to deal with the issue of compensation if mail got lost making it a "high risk type of product to carry via post."



Stock Exchange forgery 1872–73

The **Stock Exchange forgery** was a fraud involving forged postage stamps applied to telegraph forms perpetrated at the London Stock Exchange during the years 1872 to 1873 which was only detected more than 25 years later.

Description of the fraud In 1870 the telegraph systems of the UK were nationalised and run by the Post Office. The development of the telegraph systems had been of great benefit to the Stock Exchange as stock prices could be quickly communicated. If those working at the Stock Exchange wanted to send a telegram they would write their message on a telegram form and take it with payment of 1/- or more to a clerk who would then give them a 1/- green stamp to apply to it. The clerk then cancelled the stamp with a dated postmark to indicate that the appropriate payment had been made. A fraudulent clerk supplied forged stamps for the forms in order to steal the expensive 1/- fees without depleting the stock of genuine stamps which were subject to audit. The fraud was successful because the forged stamps were only used on certain days and the stamps were convincing forgeries that were not retained by the customers who only handled them briefly. After the telegrams had been sent the forms were filed before later being put in a bag for disposal.

Discovery, The fraud was not detected at the time and could have remained undetected had all the stamps been destroyed as originally intended; however they were retained by the Stock Exchange for a period, after which they were disposed of as waste paper. Some of the forms eventually came into the hands of stamp dealers, and the fraud finally came to light in 1898 when the young philatelist Charles Nissen noticed the following differences from the genuine stamps.



- * Victorian stamps included letters in the corners indicating their positions on the sheet. Some of the forgeries had lettering with impossible sheet positions. The letters were also slightly larger and the corners were blunter.
- The genuine stamps were on watermarked paper showing a rose spray whilst the forgeries were not watermarked.
- The forgeries were printed by lithography whilst the originals were typographed and had a slightly crisper appearance.
- There were forged versions of printing plates 5 and 6 of the stamp, with fewer examples of plate 6 which were better quality forgeries.
- The dates when the fraud was operating are apparent from the dates on the Stock Exchange postmarks applied to the stamps. As a large number of forged stamps were found and 1 shilling was a significant sum at the time it is likely that the fraud was highly profitable for the culprit(s) who were never identified. The forged stamps are now worth more than the originals to collectors.

Auckland Philatelic Society, Inc.

P. O. Box 1932, Auckland 1140,
New Zealand. APS meetings on
1st & 3rd Tuesdays each month

Wellesley Philatelic Society

South Auckland Philatelic Society

North Shore Philatelic Society

Pukekohe Stamp club

Whangarei Philatelic Society

Meetings Hamilton Waikato
Philatelic Society

Meetings are held on the 1st and 3rd Wednesdays each month (except Christmas and January) at 7:30pm. Visitors are welcome.

Meeting Place: St Francis Church Hall, 92

Whakatane Philatelic Society
Tauranga & Districts Stamp Club
Thames Valley Philatelic Society

Wanganui Philatelic Society

Kapiti Philatelic Society
16 Meadow Court, Paraparaumu 5032

Phone: (04) 297 1197

Hutt Valley Philatelic Society

Horowhenua Philatelic Society



Hawkes Bay Philatelic Society
Hastings Stamp Collectors

Upper Hutt Philatelic Society
Hutt Valley Philatelic Society

Manaeatu Philatelic Society

Taranaki Philatelic Society

Wellington Philatelic Society

Meetings

The society meetings are held from 7:30pm on the 4th Monday of each month (except December) on the First Floor, Anvil

Christchurch CPS is located at the Philatelic Centre, 67 Mandeville Street, Riccarton, Christchurch. CPS meets here every second Tuesday of the month at 7:30 pm and the sub groups meet here on a regular basis

Timaru Philatelic Society

West End Hall, West End Park off Maltby Avenue, Timaru 2nd Wednesday monthly at 7:30pm.

Ashburton stamp club 6 Cross Street, Ashburton 7700
Phone: (03) 308 7906

Wakatipu Philatelic Society

Southland Philatelic Society

DUNEDIN PHILATELIC SOCIETY Inc.
Meetings are held on the 4th Thursday of the month (except December)
Please note that there are 5 Thursdays in March, May, August and November. St Mary's Anglican Church Hall on the corner of WHITBY and LAWRENCE streets, downhill from the Mornington BP service station (Starting at 7.30 pm with Sales Tables starting at 7.00pm)

FACT or FICTION Interesting snippets from the 2016 ACS catalogue-MUH prices

1855 to 1920 approximately \$58,400

1898 pictorials set 14v \$5000

1920 Victory set 7v \$400

1926 Admirals set 3v \$850 Officials 2v 675\$

1931 airmail issue set 3v \$400

1935 stamp issue \$300 Officials issue\$1000

1935silver jubilee 6d orange \$50

1936 Airmail 6d blue \$40

1938 KGV officials 14v \$400

1940 centennial set 13v \$ 160 Officials \$425

1953 EiiR queen on horse 4v\$270

1960 definitives top 5 v \$ 160

£1 pink geyser \$50 \$2 geyser \$ 25 \$2 geyser \$60

Stockholmia health mini sheet \$250

Best of 2002 PO mini sheet \$350 Best of 2004-15 \$250 ea

Presentation packs @250 each from 2000 onwards



PYC Stamp Camp 2016 - Building Youth Exhibiting

the **Philatelic Youth Council (PYC) of New Zealand.** The Council's mission is to promote Youth Philately throughout New Zealand and to encourage youth stamp collecting and exhibiting in general. PYC sponsors Youth Stamp Camps each year. This year the annual PYC Stamp Camp is hosted by the Hutt Valley Junior Stamp Club and will be held in Wellington at the [Wellington Cadet Centre](#) over the period Sunday afternoon 17th to Saturday morning 23rd April 2016. Stamp camp is a great time for young philatelists from across the country come together to spend a week planning and constructing their philatelic exhibits as well as reconnecting with friends and having fun. Exhibiting is also a great way to get you moving from just accumulating or collection into a deeper level of philately. . At these camps youth philatelists learn how to start planning and presenting a philatelic exhibition. One of the areas that PYC supports and promotes strongly, through local junior stamp clubs, is achievement awards. These achievement awards are designed to develop the understanding for youth philatelists from a basic to an advanced level of their philatelic understanding and competency.

WAHT WENT WROGN

Ailsa Mountains, Lake Wakatipu

With silver fronds overprint on fern logo

With missing fronds on silver fern logo (recalled by New Zealand Post)



Too many children die on NZ roads with over 1500 injured every year. it was appropriate that the 1996 Health stamps should promote children's road safety. 1996 saw the first self-adhesive Health stamp (in coils of 100) produced in addition to the normal miniature sheet and sheet stamps. However, on receipt of the designs an error was noticed in the 40c + 5c Children's Health Surcharge design (the child was illustrated incorrectly sitting in the child restraint seat). Due to the short time frame before issue date the sheet stamp was reprinted by Southern Colour Print and the miniature sheets and self-adhesive stamp reprinted by Sprintpak Australia Post. A small quantity of the incorrectly designed stamp in both self-adhesive and sheet format were sold in error from at least two New Zealand Post Shops.

The **1904 Pictorial 4d Lake Taupo invert** considered to be the rarest New Zealand stamp. The centre vignette is inverted in relation to the outer frame. The stamp was discovered in a schoolboy album in 1930 and no other copy has been found since then. It was part of the first pictorial series originally issued in 1898 but reissued in different colours and sizes in 1899 and 1900 The 4d stamp depicts Lake Taupo. The same design was used for a 1d value issued in 1898. The sole example is used, postmarked Picton 1904.



How many legs does a bird have? This massive shift of the red in the printing process caused this print run to have birds with 4 legs

The beakless bird, more problems with red ink made this pair of birds have no beak when the red ran out



The 'Stars Overprint Error': The newer 1½d stamp with large figures had been on sale for 2 years, but a few sheets of the original 1953 issue were returned and some were also surcharged They can be easily detected as they have the Southern Cross visible on the bottom right. Because the 1953 1½d stamp without o/p is very cheap, collectors should be extremely wary of forgeries. Compare the relative positioning of the obscuring bullet and the text, the character font used and the reflectivity of the ink against the correctly surcharged stamp - they should be identical. The gum side of the stamp should show indentations in the shape of the overprint. The 2½d surcharge on the 1955 3d red stamp appeared in 1961 after the definitives had been withdrawn and replaced by the 1960 Pictorials. When initially issued there was no 2½d stamp in the 1960 Pictorials issue and after another rise in postage necessitated a new stamp, the 3d stamp which the PO still had large stocks of, was overprinted to fill the gap.

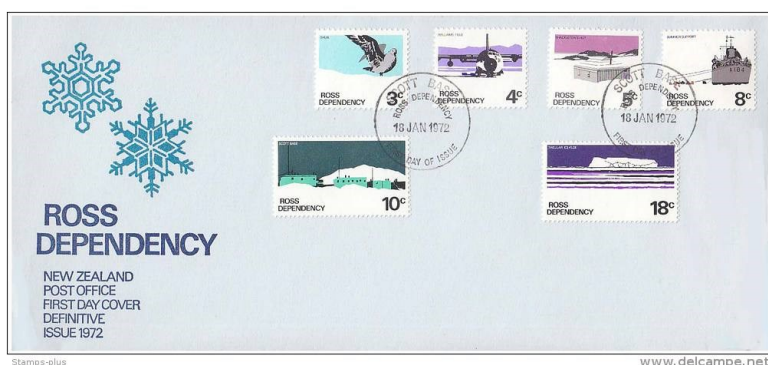
Woops, missed the boat here: the cancelled HMS Vanguard stamp In 1949 a proposed Royal tour to Australia & NZ was cancelled owing to the poor health of King George VI. The royal party was to travel on HMS Vanguard as on their 1947 South Africa tour. A set of 4 stamps was prepared for the NZPO by Waterlow & Sons of London. When news came that the tour was cancelled the stamps were ordered to be destroyed. Apparently some were caught in the door of the furnace and were salvaged; the rest were burnt.



Postage stamps and postal history of the Ross Dependency

Ross Dependency stamps have been issued by New Zealand postal authorities for use on mail from Scott Base since 1957. Overprinted New Zealand stamps had been used for mail on two earlier expeditions to the region.

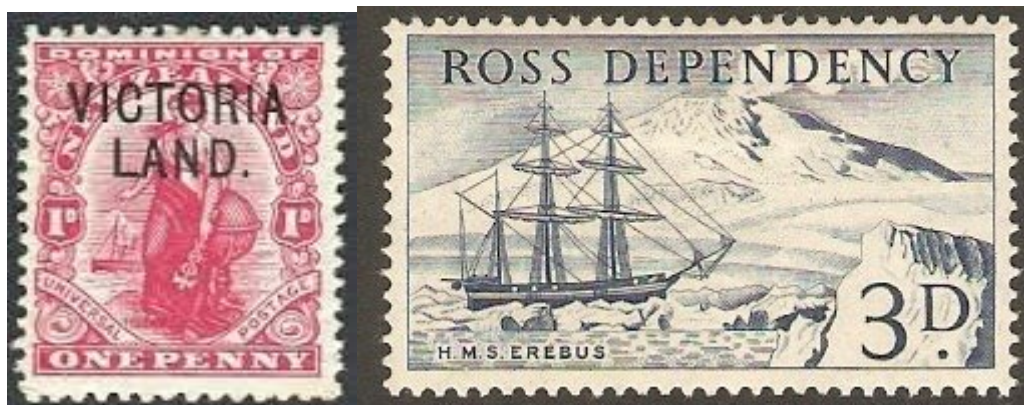
King Edward VII Land (1901 to 1909)



Before leaving New Zealand on the 1908 British Antarctic Expedition, Captain Ernest Shackleton was appointed as a New Zealand Postmaster, and provided with 23,492 New Zealand "Penny Universal" stamps, overprinted "King Edward VII Land", for use on the expedition. He was provided with a circular date stamp, "BRIT. ANTARCTIC EXPD.", with "N.Z.", and time, date, year on four lines in the centre, which was used to postmark mail from the continent. Due to ice conditions, Shackleton was unable to reach King Edward VII Land, and established his base in McMurdo Sound.

Victoria Land (1837 to 1901)

Before leaving New Zealand on Terra Nova Expedition in 1910, Captain R.F. Scott was appointed as a Postmaster. 24,000 New Zealand "Penny Dominion" stamps (200 sheets) were overprinted "VICTORIA LAND.", of which 23,171 were carried by on the expedition. During 1912, an additional 2,400 Edward VII ½d stamps were overprinted, and 1,940 of these were carried aboard the Terra Nova when it returned to Antarctica in the 1912-13 summer season.



the
ed
him

Ross Dependency: 1957-1987

The first stamps inscribed Ross Dependency were issued on January 11, 1957, in conjunction with the New Zealand Antarctic Expedition, led by Sir Edmund Hillary (part of the Commonwealth Trans-Antarctic Expedition). Before the expedition left New Zealand, on 23 November 1956, Hillary had been appointed postmaster. When the expedition chose the site for Scott Base, a post office was established, initially in a tent. The initial set of stamps consisted of 4 stamps, in the denominations 3d, 4d, 8d, and 1s 6d. When New Zealand adopted decimal currency in 1967, the stamps were reissued in denominations of 2c, 3c, 7c, and 15c.

A new definitive set, consisting of six stamps denominated 3c, 4c, 5c, 8c, 10c and 18c was issued in 1972. The next set, issued in 1982 to mark the 25th anniversary of Scott Base, consisted of 5c, 10c, 20c, 30c, 40c and 50c stamps. The post office at Scott Base was closed in 1987 as part of the rationalisation of New Zealand Post. Mail from the base was handled in Christchurch, and the issuing of "Ross Dependency" stamps ceased.



anunciada

Welcome the president welcomed 12 members and 2 guests Peter Macallum and Klaus on holiday from Germany. Good to see you again

Minutes the minutes of the previous meeting were taken as read moved by Alan 2nded by John Glaiyser and passed unanimously.

Matters arising Alan offered to send some material to the upcoming Wellington Youth Stamp camp Paula will deal with the newsletter while Alan is away on his travels - we look forward to his report of his experience in an Indian post office

Correspondence mail in 2 Mowbray catalogues Wellington Youth Stamp Camp calling for donations

mail out Ann has prepared a letter to go to Blenheim Stamp club about their clubhouse project.

Letter of the month this month was V

Len V for victory WW2 envelope from Egypt Robert Victoria on the throne issued by the State of Victoria (Aus) Barry stamps of Vietnam Ann Vietnam variety Mike Victoria stamps of Tasmania to 1901 Stephen V for Victory NZ issues Kelvin Americas Cup victory sheetlet of 1995 the winner was Robert

Items of interest a letter using an old FDC from Tonga arrived in the club mailbox

Special report at the committee meeting in January we dealt with the issue of donating to the Blenheim clubhouse project and we have decided to donate the sum of \$5000 when they provide details of the work commencing. The programme for this year was decided as follows

March, Speaker April, 4 page competition May, Postal History Society annual get together June, AGM July Robert Packer with postcard collection. Aug, bicker/barter Sept, Alan on stamps of Israel Oct, 8 page competition Nov, Robert on his Finnish stamps collection. Dec, Christmas meeting with auction

This year we will be traveling to Blenheim for our top of the south meeting/get together

Meeting closed at 8.30pm **the Next meeting is March 8th EVENING 7.30pm the display page of the month will be C**

#####

Published monthly by **Nelson Philatelic Society** Free to Full Members

PO Box 16, Nelson 7042

2015 Editor Nik Rakels Bledisloe Ave Stoke Email: madnomadik@gmail.com

Meetings on the second Tuesday of the month from 7.30pm at Stoke School winter meetings Sundays from 1.30 pm also at Stoke School at 7:15pm for the sales table, the meetings start at 7:30

2016 meetings will be on the following days and times February 9th you're a bit late for that one !) Tuesday March 8th 7.30pm

then **NOTE the next 5 meetings are Sunday afternoons starting at 1.30pm**

April 10th May 8th June 12th July 10th August 14th

then back to normal evening schedule 2nd Tuesdays at 7.30pm

September 13th October 11th November 8th December 13th