

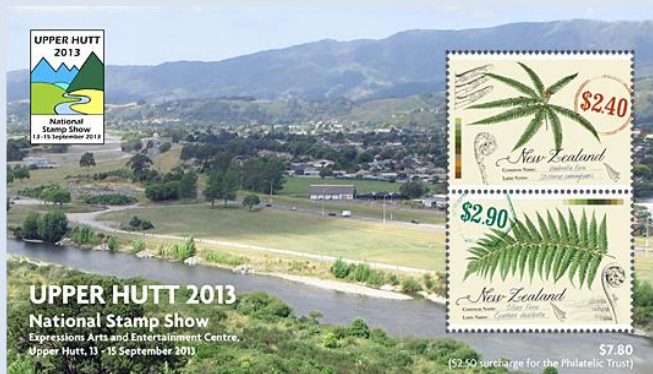
# NELSON PHILATELIC SOCIETY (Inc)

Website: [www.nelsonstamps.org.nz](http://www.nelsonstamps.org.nz)

October 2013

No. 357

## New Zealand's latest:



The Upper Hutt National Stamp Show is celebrating its Golden Jubilee in 2013. The show was held 13-15 of September.

## Christmas Stamp First Day Covers



## 5 Gummed Stamps



## 3 Self Adhesive



USA  
Christmas  
Stamps  
For  
2013

Meetings on the second Tuesday of the month at Stoke School at 7:15pm sales table, 7:30 meeting  
**Club Programme**

**Tuesday Oct 8:** 8 page competition Subject: Open or extended your 4-page exhibit from April

**October Display letter: i**

Since October 1 is World Vegetarian Day... There will be a special prize (Lucky Dip or bar of Chocolate!) for a stamp or display with stamps showing flowers, fruit or vegetables or animals that are NOT carnivorous!

Published monthly by Nelson Philatelic Society

PO Box 16, Nelson 7042

Free to Full Members

**Editor:** Pam Frahm 47a Martin St., Nelson 7011 **Tel/Fax:** 5476322 **Email:** [frahm@ts.co.nz](mailto:frahm@ts.co.nz)

Turtles eat vegetables....





Blenheim visit last month – see website for more photos



## THE 2013 BLENHEIM-NELSON YEARLY VISIT

This year it was the turn of Nelson to host members from Blenheim. We started with the president welcoming everybody, plus a special guest... Len Jury had wanted to come to Nelson, so Alan invited him to the day's events.

Len started by talking about having an exhibit, and making it more fun; saying one way to do this was entering an 'open' class. This gave great opportunities as the only guidelines were to aim for 50% non-philatelic items, and to add extra points by including rare items (a puzzled discussion about what is rare followed). Open class frames are not tied to using stamps only, and allow a wide range of subjects.

Len then displayed a large blank page and progressively asked us to give him 1) a subject, 2) select one from these - dogs, 3) then ideas about dogs, 4) then take an idea and refine it and brainstorm. He then moved on to 3 pages with ideas on what to use - since we can have philatelic and non-philatelic items, and how to help us amass stuff to use. He spoke of where to get things, especially the unusual non stamp items.

All this was thought provoking stuff, so he put it to the test. Lynne had her exhibit about "Bees" and we were asked to identify how many themes there were, what was non-philatelic, and what were philatelic examples.

Paula displayed her "Children's Literature" project, in which she used reading progression by children as the main theme.

*Continued on page 6*

## 2012 Children's Health Stamp

The 2012 Children's Health stamps pay tribute to the NZ sea lion, and there it was only fitting that they were launched at Auckland Zoo. The launch was attended by children from the Pakuranga Children's Health Camp, Koro Percy Reedy, Dr. Fiona Inkpen, and various media. The stamps were officially launched by Ivor Masters, Head of Stamps, NZ Post. Afterwards the children and guests headed to the sea lion enclosure to see the endangered species first hand, and listen to a talk from Joel Milichich, Keeper of the Elephants and Sea Lions.



Left image (back row from left): Dr Fiona Inkpen, Ivor Masters; (front row from left) Hadrian Mace, Callum Poole, Jerry Sinopati. Right image: Children from the Pakuranga Children's Health Camp at the sea lion enclosure.





## The road to a Tiki Tour

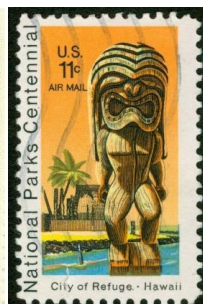
Producing a stamp set like “Tiki Tour 2” is a journey in itself. As with the original Tiki Tour stamp issue NZ Post worked with Assignment Group, who got long-time favourite illustrator Evan Prudie on board.

After a few rough pencil sketches and much debate they agreed on the best direction to go. Evan then set about creating a finished drawing of the map with the various characters and landmarks in place. As you can imagine there was no shortage of opinion about the places they should visit this time round.

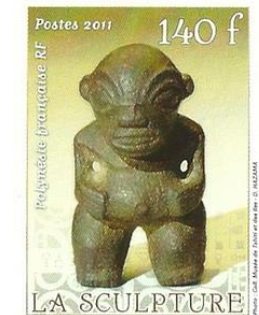
Soon after, Evan got started on the finished painting, which was made to A1 so that none of the detail was lost in the final stamps. Once this was approved it was scanned in preparation for the next part of the journey.

Geoff Francis, a regular collaborator, then set off on his computer to add the place names and graphics. Some final adjustments to the colour and a few lines of copy added by the team at Assignment brought about Tiki Tour Part 2.

All that was left was to add some first day cover designs and it was off to the printers. (Focus issue 54 – October 2012)



## Tiki Stamps





# AMAZING STAMP STORIES

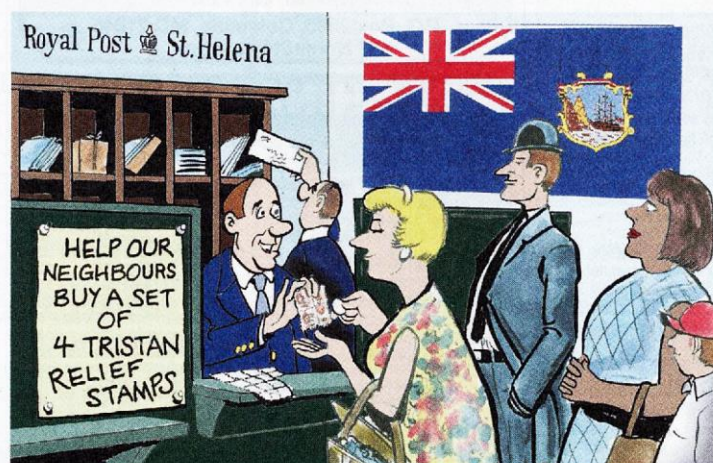
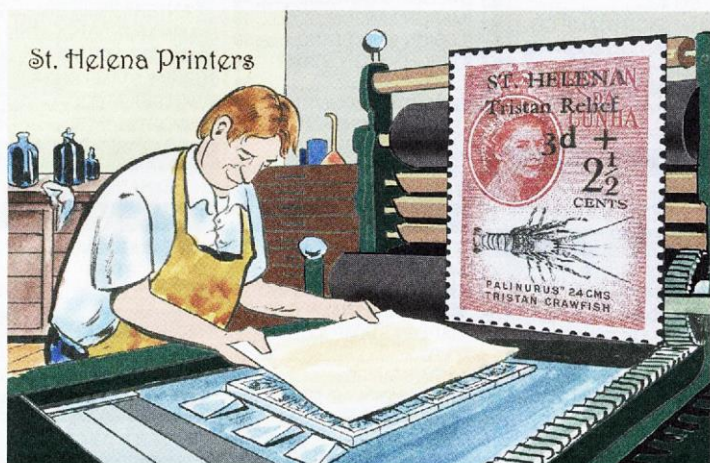
by **DAVID LODGE**  
and **PATRICK M. REYNOLDS**

©2012 Linn's Stamp News



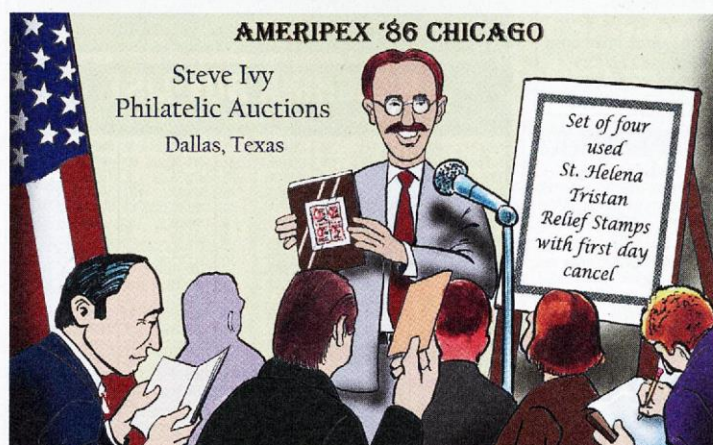
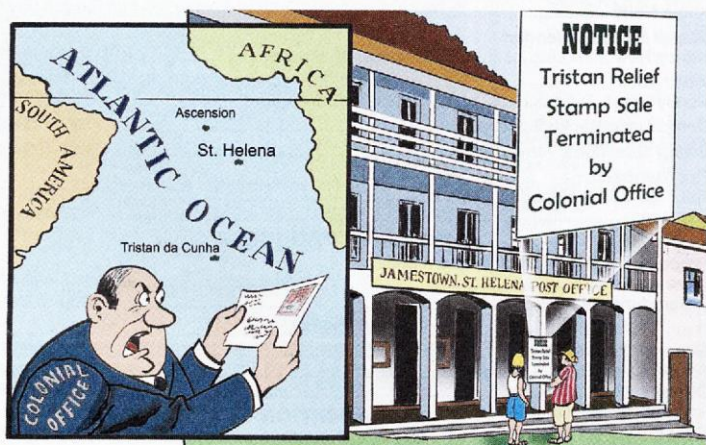
## RELIEF HALTED!!!

ST. HELENA, A BRITISH CROWN COLONY GOVERNED BY ENGLAND SINCE CAPT. JOHN DUTTON ARRIVED IN 1659, LIES WITH ITS FORMER DEPENDENCIES ASCENSION ISLAND AND THE VOLCANIC ISLAND GROUP OF TRISTAN DA CUNHA IN THE SOUTH ATLANTIC OCEAN ABOUT MIDWAY BETWEEN AFRICA AND SOUTH AMERICA. ON OCT. 9, 1961, A VOLCANIC ERUPTION ON TRISTAN CAUSED THE EVACUATION OF ITS ENTIRE POPULATION TO FORMER MILITARY BASES IN ENGLAND.



TO RAISE MONEY FOR THE 268 EVACUEES, THE ST. HELENA POST OFFICE OVERPRINTED FOUR 1960 TRISTAN STAMPS (SCOTT 46, 49-51) WITH "ST. HELENA/TRISTAN RELIEF," ADDING A SURCHARGE THAT INCREASED THEIR COST.

ON OCT. 12, TWO DAYS AFTER ALL THE TRISTAN ISLANDERS FLED, ST. HELENA, RELEASED ITS OVERPRINTED TRISTAN STAMPS (ST. HELENA SCOTT B1-4). THE EVACUEES WERE ON A DUTCH LINER FOR PASSAGE TO SOUTHAMPTON, ENGLAND.



THE SALE OF THE UNAUTHORIZED STAMPS HAD NOT BEEN FORMALLY APPROVED BY THE COLONIAL OFFICE IN LONDON, WHICH WITHIN DAYS DEMANDED THEIR WITHDRAWAL. ST. HELENA POSTAL OFFICIALS ACQUIESCED, AND THEY WERE WITHDRAWN FROM SALE OCT. 19.

AT THE 1986 AMERIPEX SHOW IN CHICAGO, STEVE IVY AUCTIONED TWO SETS OF RELIEF STAMPS. A LIGHTLY HINGED, ORIGINAL GUM SET REALIZED \$2,970, AND A MATCHED USED SET OF BOTTOM LEFT CORNER BLOCKS WITH FIRST-DAY CANCEL, \$4,510.

AFTER A WEEK OF RELIEF STAMP SALES, ST. HELENA OFFICIALS NOTED THAT 434 SETS OF FOUR HAD BEEN SOLD, AND THE BALANCE OF THE STOCK DESTROYED. SOME EVACUEES RETURNED IN MID-1962, THE REST IN NOVEMBER 1963. IN 1966, 35 ISLANDERS RETURNED TO ENGLAND. THE 2012 SCOTT CATALOG LISTS THE SET OF FOUR USED ST. HELENA SEMIPOSTALS (SCOTT B1-4) AT \$2,650. MINT ISSUES ARE UNPRICED.







# In the News



Since childhood Rachel Markwick enjoyed all aspects of the arts and couldn't have chosen a better place to live than Stroud, England. It's a town full of artists and creative people with a very vibrant events calendar.

In recent years her particular area of interest has been in creating collages using postage stamps. The reaction from most people when they see her work for the first time is one of complete surprise and it's not until they examine it closely that they realize that she has used them to create pictures.

Articles about her stamp collages have appeared in the press and in stamp magazines including Stanley Gibbons Stamp Monthly, Stamp Magazine and The American Philatelist.

Rachel says, "I'm frequently asked, where I get all the stamps, I still have stamps I collected from a very young age, and also the collection which belonged to my father. His love of stamp collecting led to my parents establishing a small stamp business, known in the trade as Approvals, where booklets and packets of stamps are put together and sent out by post to collectors who choose what they want to buy and then return the remainder, with payment. My early memories include sitting at the table helping to sort out the stamps.

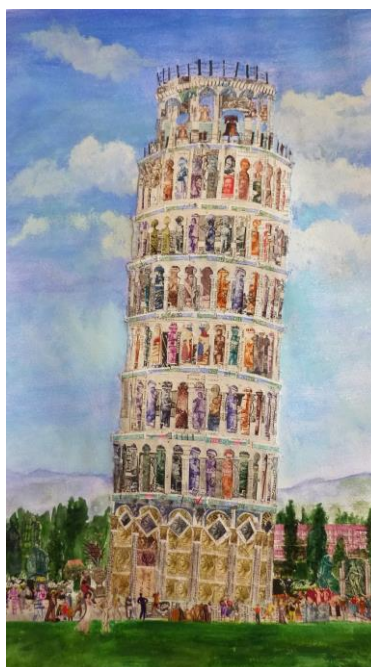


## COLLAGE ARTIST – RACHEL MARKWICK

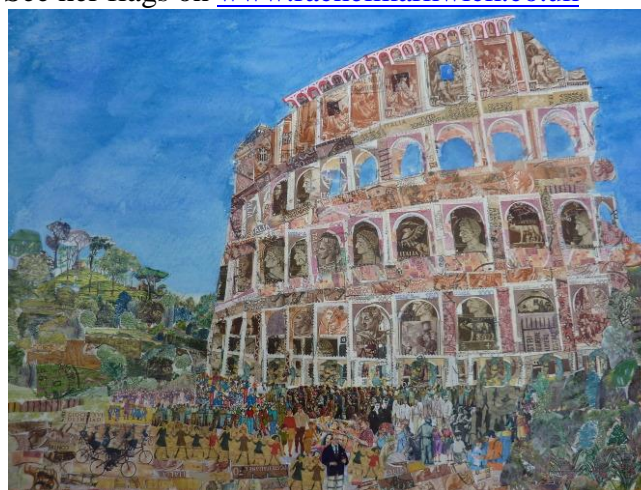
"When my father retired as a journalist, my parents bought a house with a shop, from where they sold stamps. I was married by then with a growing family and also had a few years running an Approval business myself, but my main interest was in art and that began to take over.

"Sadly during the second year at Art College my father passed away and my mother and I were faced with the task of sorting out the room full of stamps which made up the stock of their business. When my mother moved to live with us, we had to make the decision to sell most of the stock but luckily I had the foresight to keep quite a lot of the stamps.

"It was one of the Art course projects, involving illustrating a poem, that inspired me to use some of those stamps, and that proved to be the catalyst for my continuing stamp collage work. I never get tired of using stamps and postal related material, I often find new and exciting stamps from all over the world which trigger off yet more ideas."



See her flags on [www.rachelmarkwick.co.uk](http://www.rachelmarkwick.co.uk)



Famous Landscapes



Animals and Flowers





**Welcome:** Allan welcomed 12 members.

**Minutes:** Minutes were taken as read as circulated in the Newsletter *paula/nik*

**Matters Arising:** Nil.

**Correspondence In:** Catalogues X6: Newsletters from Kiwi Stamp circuit; Dunedin (Centenary issue); Auckland Philatelic; Dunedin agenda for celebrations; Upper Hutt stamp show; NZ PF minutes and press release. Subs X 3. Emails various swap requests. *paula/barry*

**General Business:** Barbara and Paul congratulated us on the annual visit with Blenheim with Len Jury as our guest speakers. There was a good turnout from both Nelson and Blenheim on a beautiful Nelson day. The food was provided by the club and was well received by all. Len gave an entertaining and encouraging talk on exhibiting in the 'open' class.

- Allan thanked Ann for her effort to make the day a success, especially for the food.
- A general discussion about exhibiting and what made up philatelic material followed. The classes were discussed about what made up each class. Mike asked if there was any written criteria for exhibition entries. The general consensus was that it seemed to depend on the judges personal preferences.
- Nik suggested that we pursue the possibility of the utilising the library display space.
- Allan reminded us that the next meeting is the 8<sup>th</sup> October. It is our 8 page competition. Ann challenged us to all take part.
- Paula asked for someone to take the minutes next month. Thank you Nik.

**Items of interest:** Paul - a dig at the NZ post re delivery of a courier parcel.

**Letter of the Month- D**

Dinosaurs – Ann  
Duke Of Edinburgh Awards - Barbara  
Postage Due - Robert  
(Winner)  
Diving helmets – Kelvin

**Special Display – Legs**

Ann –  
Barbara - Winner

**Program:**

The meeting closed at 8.10pm. A very informative discussion and demonstration of rust removal, dealing with adhesive stamps and an album creating programme was given by Mike. Thanks Mike.  
Next meeting October 8

*Continued from page 2*

The question was posed: "what is rare material for her", and "where to now", as she wanted to enlarge the exhibit but couldn't decide how - *suggestions of old envelopes from an author's birthplace, old coins, or go on to the Hobbit, or expand to another author.*

Elsbeth had a small display of 1930's health line block essays and proofs by James Berry.

Rien showed us, "what you shouldn't collect!!" with some FDC's from the old Dutch East Indies colonies. He explained how this was pushed as big business in the 1970's and quickly became a propaganda business. Now they can't be given away and are disdained in competition.

Mike Harvey showed us his plan of action for an exhibit about the NZ black robin, but said he was struggling to get anything more or much philatelic content.

A beautiful lunch was created and served by Anne Ross; we dined in style on soup, warm rolls and savouries. After lunch the afternoon session began.

Paula showed 5 frames of postcards of English cathedrals. As she was trying to tell a story, it was arranged as a tourist tour of England... as written by a travel company. There was a lot of background on each with very impressive postcards.

Pam described herself as 'just a collector', not a stamp collector and somehow fell into a group called the ACE Envelope Club (Art Cover Exchange) where

members send each other hand made covers and design FDC's. She displayed a selection of these and told us about the ACE-fest gathering, and the Aug 1st Target Day where everybody sends a letter to 1 chosen member – this year he got over 900 letters!

Len returned with an exhibit showing the development of Registered Mail markings until 1908 by the NZPO. He said he has begun researching this and hopes to do much more. The registered post markings were thought up by the PO Master to ensure delivery – which started simply, but involved lots of paperwork and it rapidly got complicated. There were examples of NZ internal delivery and NZ to overseas mail as well.

Anne Ross had a number of 1-page exhibits on various themes such as Dogs, Canada Day, & Elephants.

Elsbeth questioned NZ post with post rate inconsistencies and parcel handling charges, etc. and displayed items of interest from the time she was post-mistress in the Marlborough Sounds during the 60's - 80's.

Ron finished off with a huge exhibit about the American Civil War. He covered the cause (slavery), the reasons for, and lives of slaves, postage issues by the north and south, soldiers mail, money, official war correspondence, soldiers food (called hard tack), gun designs, and finally stamps about the nursing profession and red cross. His very impressive display covering all sorts of aspects, not just fighting the war.

It was not a huge group of people but a nice day out. Thanks again to Len Jury for an unexpected pleasant bonus visit. - Nik