

NELSON PHILATELIC SOCIETY (Inc)

April 2014

No. 362

Feb contest: Learn to draw a horse and design a stamp for Year of the Horse – **winner Pam Frahm**



Read more on page 4

Happy Easter



Meetings on the second Tuesday of the month at
Stoke School at 7:15pm sales table, 7:30 meeting

Club Programme

Tuesday, April 8th: Our annual Postal History night – expect a great talk from Kelvin

The Question is... what will you do for the April Display letter?: Q Q Q Q Q Q Q Q Q

Published monthly by **Nelson Philatelic Society**

PO Box 16, Nelson 7042

Free to Full Members

Editor: Pam Frahm 47a Martin St., Nelson 7011 **Tel/Fax:** 5476322 **Email:** frahm@ts.co.nz

Autumn Leaves



Our Club – Who we are and What we like to collect.

(Each month we will feature 3-4 members and their collection interests. We hope this will stimulate discussion and trading)

Allan Smellie (President)

- GB general and specialist 1d red; G 6th; Wildings and Machins. NZ everything including Alternatives. Israel mint to 2000. Canada. Australia. Sweden. Ireland.



Paula Huckelsby (Secretary)

NZ 1900 - 2000; stamps depicting children's literature, sheep, rugby and flags.



Pam Frahm (newsletter editor) – NZ (but since 2000 I only save FDCs), American (as they come), Australia (cheap ones from the Circuit Books), **Thematic:** Antarctica, NZ Bird Habitat (hunting license stamps), USA American Indians, USA Christmas, Hawaii, handmade Mail-Art envelopes.



Postmark (date stamp) service

The standard 'New Zealand Post' postmark (date stamp) is used for all mail processed across the country, and is an important part of postage. Postmarks are used to ensure postage isn't used more than once, and to identify which postal operator has carried the mail.

The standard national postmark includes the date of cancellation to demonstrate our commitment to meeting service standards. The standardised postmark includes a 3-digit cancellation code, for New Zealand Post reference, to enable us to identify and track where mail has been processed. The cancellation code relates to the geographical location and sort zone.

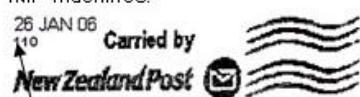
Under the Postal Services Act, postal operators are required by law to identify mail they carry. Any additional information – such as place or time – is provided at the carrier's discretion. While the place of cancellation is no longer being provided to avoid, New Zealand Post will continue to include the date mail is cancelled to demonstrate its commitment to meeting service standards.

New Zealand Post values the commitment of collectors of our stamps and appreciates the importance and value placed on postmarks. We continue to provide the current cancellation services offered through the Collectables and Solutions Centre and also offer pictorial postmarks in some regional sites.

Examples of postmarks

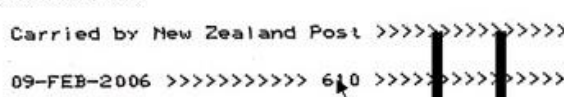
Inkjet cancellation:

IMP machines:



Cancellation code (for internal use only)

CFC machines:



Cancellation code

Example postmark plus slogan plate cancellation:

(Pitney Bowes and Klussendorf machines and Reiner roller date stamps)

CFC machines:
Date Stamp:

Cancellation code

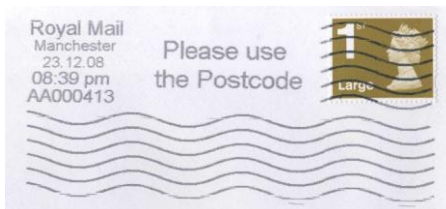
Date of cancellation



Standard Post
slogan plate:



FastPost and Boxlink
slogan plate:



Other postmarks

Local Letters' Long Week in Transit

Letters are taking a week to be delivered in Nelson.

In the case of Stoke resident John Martin, a letter from Stoke Motors, posted on Thursday, March 6, reminding him to get his car's warrant of fitness, took seven days to get to him, and went via Wellington.

Nelson City resident Carolyn Burman yesterday received a letter posted in Upper Moutere the previous Friday. "I'm hearing other people are having similar delays. It's outrageous," she said.

She is also waiting for a letter posted on Tuesday in Nelson that had not arrived by yesterday.

NZ Post closed its processing for standard letters in Nelson last December, with the loss of 30 jobs, and standard letters are sent to Christchurch for processing then back again.

NZ Post has a delivery target of up to three working days for standard post.

Those wanting next-day delivery need to send letters by fast post which costs \$1.40, twice the standard post rate. NZ Post could not explain why there were delays or why the letter to Mr Martin had gone via Wellington.

Its three mail centres are now in Auckland, Palmerston North and Christchurch.

A spokesman said: "New Zealand Post encourages anyone concerned about the delivery of a mail item to contact our customer service centre. We regret any standard mail delivery falling outside our target of up to three working days. We have been bedding in changes to across town deliveries and in the vast majority of cases, we are meeting our delivery targets."

Mrs Burman said she called the customer service centre. "The woman did not know and could not tell me why my letter took so long."

Mr Martin said the reminder letter sent to him arrived the afternoon he returned from getting his car's warrant. He checked with the sender when it was posted to confirm it had taken seven days to get to him.

"It's blimmin' disgusting," he said.

Joe Gallagher, postal industry organiser for the EPMU, said a further problem that could result from mail delays was people might turn off NZ Post which risked heightening the decline.

From July next year, NZ Post plans to cut urban deliveries to three days a week.

- © Fairfax NZ News – March 15, 2014



Easter Stamps





IN THE NEWS



25 February 2014 – Dominion Post

NZ Post delaying mail deliveries

The Postal Workers Union has called on NZ Post to reverse its policy of "holding back standard mail which has been processed and ready for delivery".

The President, Southern District, of the Postal Workers Union, John Maynard, made the comment while reacting to the announcement of NZ Post recording an after-tax profit of \$71 million in the half-year to December 31.

A New Zealand Post spokesman denied Maynard's claims saying, "New Zealand Post does not hold back standard post mail that has been processed and is ready for delivery".

"Our processes are designed to prioritise FastPost over standard post because FastPost is a premium service with a next working day delivery target. Standard post has a delivery target of three working days".

NZ Post chief executive Brian Roche said the improved result could be largely attributed to a \$32m reduction in spending that more than offset a \$12m drop in revenue.

Maynard agreed with Roche that the company had definitely reduced expenditure but questioned the mail delays.

"New Zealand Post's mail "hold over" policy is not saving money. It is providing further incentives for mail senders to switch to alternative means of communication, including a private mail delivery company," Maynard said.

NZ Post was trying to ensure fastpost mail arrived at its destination before standard mail and then require mail senders to pay more for the fastpost service. But the company was also regularly failing its own fastpost "target" of next day delivery.

"Six weeks after beginning to collect its own statistics on significant amounts of standard mail being delivered outside New Zealand Post's own delivery promise, the union is not aware that any corrective action has been taken by the company in that time," Maynard said.

He said the "hold over" of mail and the lack of concern by New Zealand Post of serious failures in its own delivery standards were of serious and increasing concern to members of the Postal Workers Union.

NZ Post's plans for the next three to five years were focused on finding cheaper ways to deal with falling mail volumes.

An NZ Post spokesman totally denied Mr Maynard's claims.

"New Zealand Post does not hold back Standard Post mail that has been processed and is ready for delivery," the spokesperson said.

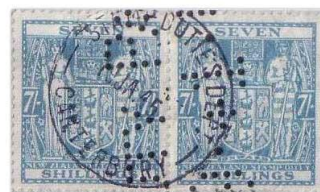
"Our processes are designed to prioritise FastPost over Standard Post because FastPost is a premium service with a next working day delivery target. Standard Post has a delivery target of three working days," the spokesperson said.

Plans were announced last year to axe up to 2000 jobs over four years.

Different modes of mail delivery would be trialled over the next six months in preparation for the start of mail to urban addresses being delivered on alternate days next year.

Roche said growing the parcels and logistics business was also a top priority with work underway to develop new opportunities from the growing e-commerce parcels market domestically and internationally.

NZ Post also planned to reduce its property ownership, including owning fewer corporate Postshops, with more services hosted by local businesses.



Message from David Huebner – American Ambassador to New Zealand

This week New Zealand Post issued a set of stamps commemorating the 70th anniversary of the arrival of American servicemen and women to defend Aotearoa and the South Pacific during World War II. What was known locally as the “friendly invasion” had a significant and very positive impact on life in New Zealand, not only for security but also socially, culturally, and economically.

By using vintage photographs drawn from the national archives, the stamps convey a sense of the charm and spirit of local interactions during the 1940s, even as war raged just to the north and west. Below are images of the stamps as found in the commemorative booklet. Following the images are the notes from the booklet describing each scene.



A. Sergeant Nathan E. Cook, 37th Infantry Division, comes down the gangway at Prince's Wharf in Auckland to become the first American soldier to step onto New Zealand soil, 13 June 1942.

B. The U.S. Camp in Central Park, Brooklyn, Wellington.

C. Taking on the locals: On 28 August 1943 a U.S. Marines selection played a game of rugby against a local Army team at Athletic Park in Wellington. The match, won by the New Zealanders 22–13, was described by a visiting American photographer as ‘mayhem’.

D. Frank Zalot - survivor of the Paekakariki disaster in Wellington with friend. Frank was a crew member of USS American Legion, and was a survivor on 20 June 1943 of a tragic landing craft capsized off our beach. (Frank attended this year with his daughter and grand-daughter a ceremony dedicating the new Sailors' Memorial at Queen Elizabeth Park in Kapiti.)

E. U.S. forces carry out a mock Pacific island landing on the Māhia Peninsula between Napier and Gisborne.

F. At a public gathering in Gisborne an American sailor, Fred Watson, discusses with Nancy O'Connor the differences between the American dollar and the New Zealand pound.

G. Private Arlen Olson (left) and Corporal Al Cartwright pose for a photograph with New Zealand ‘land girls’ Dorothy Penny and Lindsay Horwell (right), who they are helping harvest crops at Patumāhoe, near Pukekohe.

H. Columns of US troops march through the streets of Auckland towards their transport ships, which will take them to war in the Pacific.

I. Milk bars spring up all over the city to cater to American tastes, although cakes, crumpets, scones, and dainty sandwiches are usually served with shakes instead of the much preferred hamburgers, hot dogs, or grilled sandwiches.

J. The well-stocked PX store at Camp McKay (or Mackay) does an average US\$26,000 worth of business monthly.

Minutes of the Nelson Philatelic Society which met in the Woodstock Room
at the Stoke School March - 12 at 7:30pm

Welcome: Allan welcomed 17 members to this March meeting. A special welcome to Steve from afar.

Minutes: taken as read Kelvin/John G

Matters Arising: Nil

Correspondence: Correspondence For January, Feb, March was approved.

General Business:

- It was moved and seconded that we share a P O Box with the Embroideries Guild.
- Circuit Books. The results are now ½ what they yielded last year. We need to think seriously about the need to continue.
- A reminder that Pam and Allan are stepping down as per the new rotation system. Please think about taking on a role.
- May meeting - the 4-page competition theme is ANZAC.
- 17th May is Open Day at Stoke school. ANZAC competition will be put up, but any displays will be fantastic.
- Len will organise the frames. Thank you very much Len for all you do for the club with the frames.
- Weldon talked of the disposal of Laurie Dale's collection. What a big job!

Items of interest:

- Mike - a Rangiotu Military Postmark rated as a B postmark. An envelope from UK with a label with different weights - listed as stamps in Stanley Gibbon.
- John G - an envelope with a firm advertising the sale of an envelope with a killer post mark from HP1 with the names of John's Great-Great Grandparents on it, from 1859.
- Len - Sumo Wrestling calendar in special packaging.

Letter of the Month - J

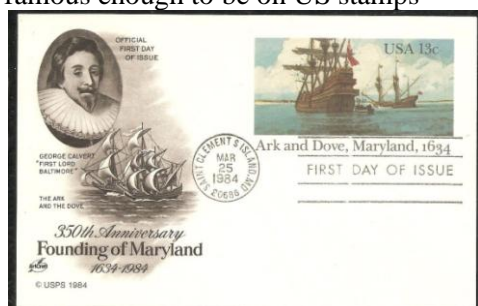
- Mike - J class locomotive to a Lady Jacobsson from Johnsonville.
- Robert - BCOFJ British Commonwealth occupational forces in Japan.
- Ann - Jersey stamps - all she owns! Including a map to show where it is.
- Kelvin - Joint pairs and joint strips.
- Len - Japan tobacco revenue tax stamps, 1949 UPU, 5-yen note. A variety of stamps from Japan.
- **Weldon - Jerusalem (in Austria) and then Jerusalem NZ with J postmarks --- WINNER**
- Stephen - Christmas covers - Jesus and Joseph. Stamps with JOY on and a postmark for Jerusalem.

Program: Meeting closed at 8:22pm followed by a fascinating and enthralling talk on bells by Robert. Thank you Robert.

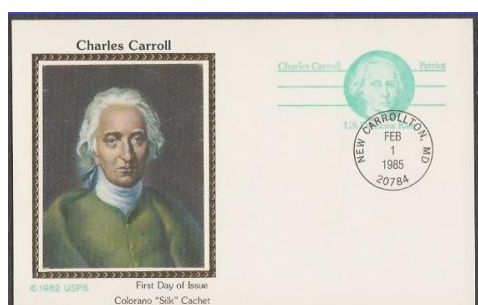
Next meeting - 8th April. Postal history

**MORE FAMILY ANCESTORS
By Pam**

I'm lucky enough to have a few people famous enough to be on US stamps



George Calvert - First Lord Baltimore. My ancestors coming to the US on the Ark & Dove (People on the Ark and supplies accompanied on the Dove)



Charles (cousin of John, the Archbishop in last newsletter) Carroll, who established Carrollton Maryland and signed the Declaration of Independence.

Coming from NZPO

2 April—ANZAC

7 April - Royal Visit

7 May—Special Issue

4 June—Matariki

2 July—Kiwiana

6 August—World War I Centenary

3 September—Children's Health

1 October—Christmas

5 November—The Hobbit: There and Back Again

14 November - Baypex

19 November - Ross Dependency and the Annual Album

Some of the USA 8 issues for March

