

NELSON PHILATELIC SOCIETY (Inc)

2017 June

New Zealand's latest:

Three documents that shape a nation will be celebrated in a new national exhibition and stamp issue: *He Tohu*.



Discover New Zealand's impeccable surf breaks with this *New Zealand Surf Breaks* stamp issue.



Normally meetings are on the second Tuesday of the month at Stoke School, 7:30 meeting

Winter Club Programme

Sun June 11, 2:00pm – club AGM, plus the Mitcherner Cup presentation, and items of interest.

PLEASE THINK ABOUT OFFICERS FOR THE NEW YEAR – and why not join the committee!!

America's Cup – this year held in Bermuda in June



USA 1970



New Zealand 1995



Australia 1987



Solomon Islands 1987

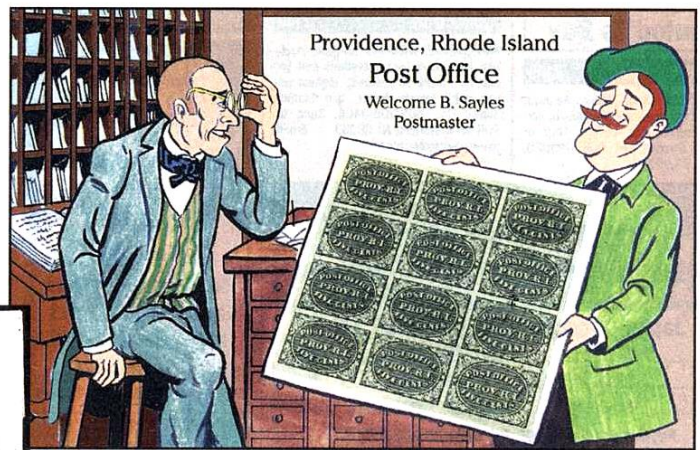


New Zealand 1992

AMAZING STAMP STORIES

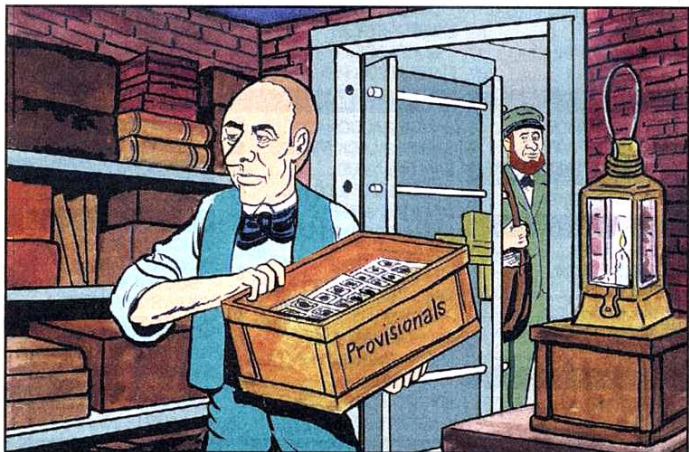
by **DAVID LODGE**
and **PATRICK M. REYNOLDS**

©2011 Linn's Stamp News



**ELEVEN 5¢
& ONE 10¢!!!**

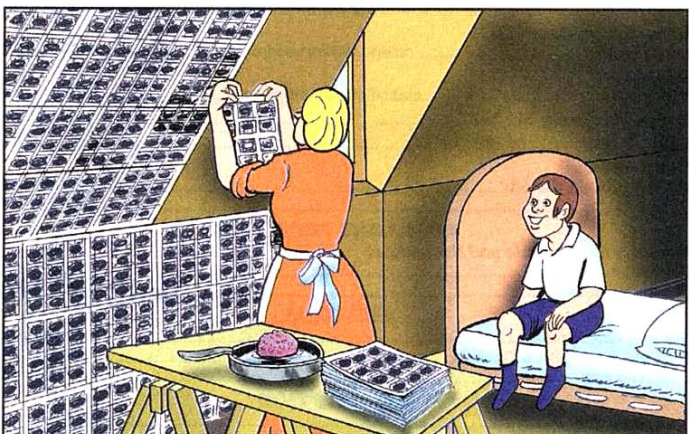
ON AUG. 24, 1846, PROVIDENCE, R.I., POSTMASTER WELCOME B. SAYLES RELEASED A SHEET OF 12 PREPAID ADHESIVE PROVISIONAL POSTAGE STAMPS IN FOUR HORIZONTAL ROWS OF THREE CONSISTING OF 11 5¢ VALUES PLUS ONE 10¢ IN THE UPPER RIGHT CORNER (POSITION 3). ENGRAVED INDIVIDUALLY ON A SINGLE COPPER PLATE, ABOUT 500 SHEETS WERE PRINTED ON A YELLOWISH-WHITE PAPER.



WHEN THE U.S. POST OFFICE DEPARTMENT ISSUED ITS FIRST POSTAGE STAMPS JULY 1, 1847, THE PROVIDENCE PROVISIONALS WERE WITHDRAWN FROM USAGE ON JULY 31, LEAVING ABOUT 200 UNSOLD SHEETS TO BE PLACED IN STORAGE AT SAYLES' POST OFFICE PREMISES.

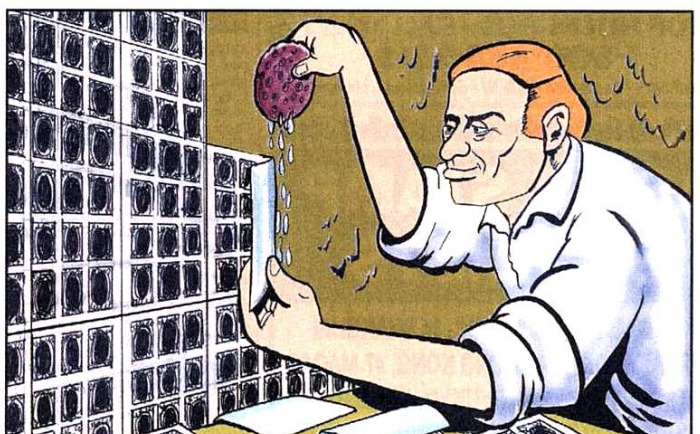


IN 1850, WHEN THE PROVIDENCE POST OFFICE MOVED TO A NEW LOCATION, SAYLES GAVE MANY OF THE PROVISIONAL SHEETS TO ONE OF HIS MAIL CARRIERS, POSTMAN JOHN HAGEN, WHO GAVE ALL OF THEM TO HIS CHILDREN, INCLUDING HIS SON FRED, TO PLAY WITH.



ALTHOUGH THE FATE OF SOME OF THE IMPERF SHEETS, IN THE HANDS OF THE CHILDREN, IS UNKNOWN, IT IS KNOWN THAT HAGEN'S WIFE DECIDED THEY WERE ATTRACTIVE AND PRACTICAL ENOUGH — WITH THEIR GUMMED BACKING — TO USE AS ATTIC WALLPAPER.

JOHN N. LUFF WROTE THAT ONLY TWO USED OFF COVER 10¢ STAMPS WERE REPORTED, BUT A COVER FRANKED WITH A SINGLE 10¢ WAS LATER SUBMITTED TO AN EXPERTIZING SERVICE. A COMMITTEE FOUND THE INKS USED FOR THE HANDSTAMPS WERE CONSISTENT WITH THE PERIOD, BUT THE OWNER WITHDREW THE COVER BEFORE A DECISION WAS REACHED, AND SOLD IT "AS IS" IN A 1979 ROBERT A. SIEGEL AUCTION FOR \$12,500. ONLY ONE OTHER 10¢ COVER IS KNOWN. THE SCOTT U.S. SPECIALIZED CATALOG LISTS SCOTT 10X1 UNUSED AT \$350, USED AT \$1,900; AND SCOTT 10X2 UNUSED AT \$1,150, USED AT \$16,500. REPRINTS AND COUNTERFEITS EXIST.



WHEN COLLECTORS BEGAN TO REALIZE THE VALUE OF THE STAMPS, HAGEN'S SON FRED CAREFULLY REMOVED THEM FROM THE WALL. NOW WITHOUT GUM, HE TOOK SOME TO NEW YORK TO BE REGUMMED. TODAY, THESE STAMPS HAVE A YELLOWISH CRACKED GUM.

Reproduction issued by the Rhode Island Philatelic Society, August 1936.
Distributed at their Tercentennial Anniversary meeting, and the 50th anniversary of the original issue.



The first issue of KiwiStamps



Over coffee several months ago, Geoff Rickards and Brian Vincent got to wonder about differences in the 1 and 2 (and subsequently 3) reprints of the KiwiStamps in dispenser boxes.

They discovered that while the reprints were identical to the original printing, there were numerous differences - some small, others clearly visible - between stamps of the same design in booklets, sheets and rolls.

The first set of 10 'non-value-indicated' self-adhesive stamps was issued on 7 September 2009. The stamps were printed in four formats - a booklet of 10, a dispenser roll of 100, a sheet of 50 and a jumbo roll. Limited numbers of booklets and sheets were printed with 'KiwiStamp' overprinted in silver foil.

The stamp designs are as follows (ordered as for the dispenser roll): The classic backyard BBQ (sausage); Farming in your Swannndri; Fish and chips at the beach; Wall ornaments (birds); Summer holidays (caravan); Mowing your 1/4 acre section; Unpredictable weather; State Highway 1 sign; Pavlova kiwifruit; and Beach cricket.

Booklets were printed by Australia Post Sprintpak and sheets, dispenser rolls and jumbo rolls were printed by Southern Colour Print. All stamps were printed by offset lithography in four process colours (CMYK). The jumbo rolls were printed separately from the dispenser rolls.

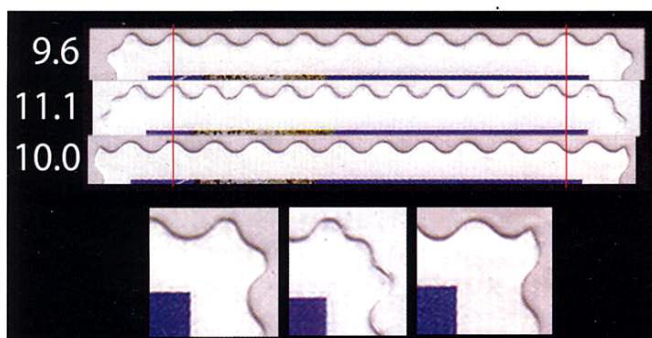
There are differences in die-cut gauges and corner styles for the stamps in the booklets, dispenser rolls and sheets.

Dispenser roll - 9.6 x 10.0, serpentine profile, standard line-style corners.

Booklet - 11.1 x 11.2, scalloped profile, standard comb-style corners.

Sheet - 10.0 x 9.7, serpentine profile, sharp line-style corners.

The jumbo roll die-cuts are as for the dispenser roll.



There are also differences in the size and design of equivalent stamps among the four products.

The design size of the sheet stamps is 21.5mm x 26.5mm, whereas the roll and booklet stamps are both 21.0mm x 26.0mm. The overall stamp size (from the outside edges of the die-cuts) also varies. Thus for one set of Swannndri stamps (for example) the measurements are:

Sheet - 25.5mm x 30.75mm

Dispenser roll - 25.0mm x 30.25mm

Booklet - 25.0mm x 30.50mm

Stamps of the jumbo roll are the same size as those of the dispenser roll.

Design differences in equivalent stamps in the four formats concern both the designs themselves and their text elements 'KiwiStamp' and 'New Zealand'. For example, in the 'Swannndri' stamps of the roll, the design frame at the right all but touches the right-most fence post, whereas in the booklet stamps this partly obscures the right-most fence post; and in the sheets it is well free of the right-most post. These differences, which arise from both alternative scaling and cropping, are illustrated below.



Also, the text 'New Zealand' in the Swannndri booklet stamps is somewhat more slender and taller but with less width, and positioned higher in the design, than it is in the rolls and sheets of stamps.



The above is a short summary of a detailed study by Brian G Vincent and Geoff K Rickards, published in *The New Zealand Stamp Collector* (June 2011). Information has been reproduced here with the permission of the Royal Philatelic Society of New Zealand Inc, PO Box 1269, Wellington 6140.



Quick Post



Answer to the
Crossword -
Thanks to Michael
Petzold:

ACROSS

1. Stoke
3. Impetus
6. Erevan
7. (see 1 ac.)
- 9,17,21. Side Face Queen
10. Specimen
11. Waste
16. Marathon
17. (see 9 ac.)
18. Export
19. Issues
20. Algeria
21. See 9 ac.

DOWN

1. Stetson
2. Overdue
4. Masterton
5. Ethnic
8. Open
10. Spaghetti
12. Feature
13. Treason
14. Manx
15. Day One

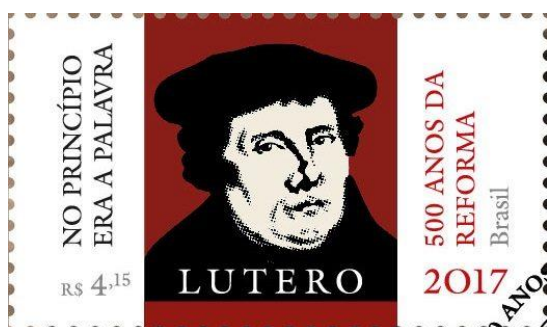
What's new around the world:



Australian Jetties



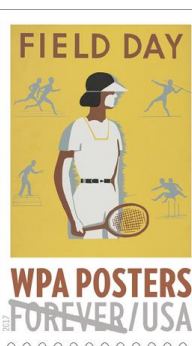
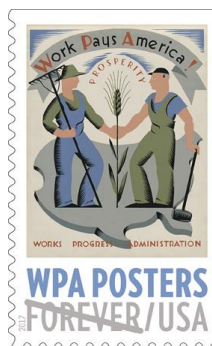
Ancient Britain



Joint issue: Martin Luther – Brazil



Martin Luther – Germany



Works Projects Administration (formed in 1935) posters – USA



Year of the Rooster – Philippines



Canada – UNESCO Heritage Sites

Minutes of May 14, 2017 2pm Meeting in the Woodstock Room of the Stoke Primary School

Welcome: President Robert welcomed 13 members and 5 guests, including a couple visiting from the Napier Society, and 3 locals.

Minutes: Having been circulated, and after a small correction, were taken as read and confirmed.

Allan/Len, Agreed

Matters Arising: Nil

Correspondence:

Outward: Nil

Inward: Various catalogues and brochures (mostly out of date), NZ Federation minutes, Taranaki Society ref Frank Watters memorial award.

"That correspondence be received" ...

Allan/ Ann, Agreed

Circuits: Allan reminded members that books should be passed on after about 3 days (or sooner) and that the colder months were "ideal" for preparing new booklets.

"Open Day" - Great support shown from a FEW members with all that was involved with setting up and dismantling. Also a good supply of material for display. The attendance was a little disappointing but none-the-less effective in encouraging several folks to get more involved with their collecting. Several folks took membership brochures.

General Business: Since the trophy that has been used for the 8-page competition over the past decade or so has gone missing, we have restored the "South Cup" to this role and duly presented to the last winner Sue Smart. (Sorry for the delay Sue).

There being no further business, Robert advise that the "Letter/subject of the Month" for the meeting on 11th June, would be the colour "orange" and that our programme would be the AGM scheduled to **precede** the general meeting. **PLEASE THINK ABOUT OFFICERS FOR THE NEW YEAR**

Items of interest: Weldon, Len and Allan each spoke to an item of interest.

Letter of the Month - D

Len, Danzig

Mike P. Deutschland

Sue Dogs, (Daschunds and Dalmations)

Ann Definite dark datestamp cancellations

Robert Danish West Indies (Denmark type stamps)

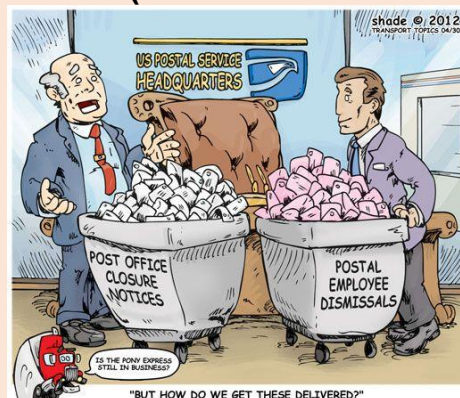
After the show of hands voting, the winner was declared to be **Robert**.

Program: We were next treated to 4 different short talks and displays from members of the Postal History Society. Thank you **Brian** (Motueka Post office and district); **Kelvin** (Golden Bay/ Takaka East); **John** (The great fraud of 1859 – Mrs Sutcliffe defrauding p/office of 8d); and **Weldon** (Westland/Buller district offices).

The meeting concluded with afternoon tea.

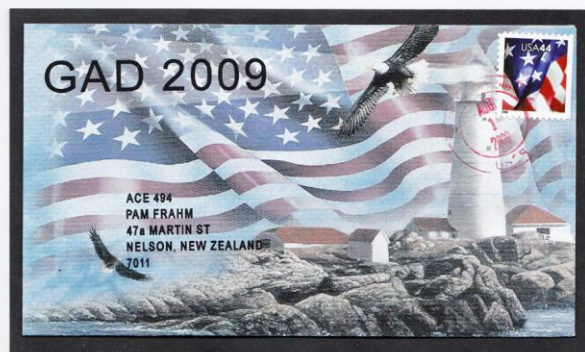
New Members: Robyn Grant (ref Open Day)

PLEASE NOTE DURING THESE AUTUMN/WINTER MONTHS OUR MEETINGS ARE 2ND SUNDAY of the month at 2.00PM. (Sales Table from 1.45PM)

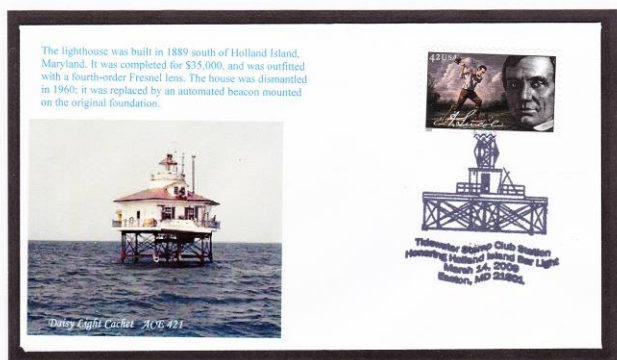


Will anyone bring these orange stamps?





The Art Cover Exchange (ACE) promotes art, philately, friendship and correspondence among its members. The special emphasis of the group is in the artistic presentation of postal covers for exchange. Using every medium from paint, paper collage, photography, or embossing members add their personal touches to their correspondence. Here are examples from Phil Edwards ACE 353, Bill Porter ACE 447, Cal Breau ACE 183, John Martin ACE 343, and Elaine Marshall ACE 488, with her hand painted acrylic mailed from Canada.



Dalene Thomas (ACE 421) established the **Lighthouse Stamp Society** in 1994. She lives in Denver Colorado with her husband Blain, has 3 sons, and 9 grandsons. She has recently created a new website for the Society: <http://lighthousestampssociety.org>. These are four of her **Daisy Light Cachets** featuring lighthouses with special postal cancellation marks.



The Lighthouse Society was established to promote the collecting of lighthouses on stamps and other philatelic related items. They publish an eight page journal, **The Philatelic Beacon** bi-monthly. It contains informative articles about stamps, with a lighthouse topic, from around the world.

Cost is \$20 for overseas membership.

